

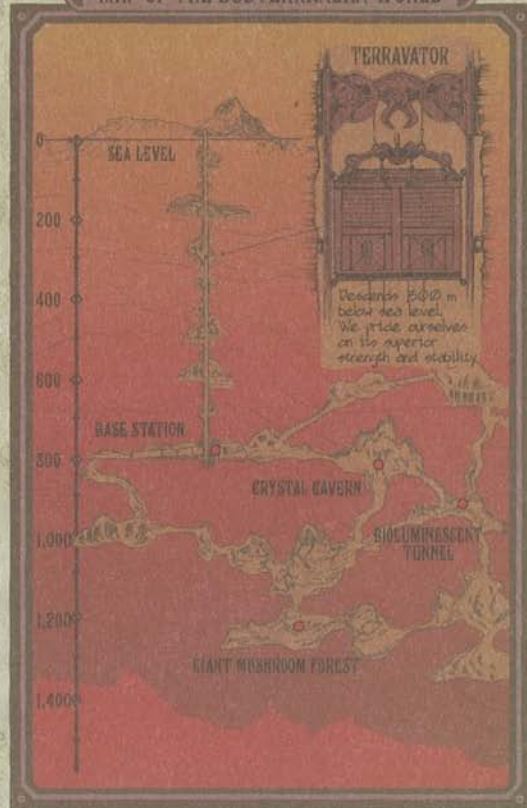


JOURNEY TO THE CENTER OF THE EARTH

MYSTERIOUS ISLAND

Members of the scientific community, welcome to "Journey to the Center of the Earth." Today, we will take you to a subterranean world filled with wonder and mystery that was discovered by Captain Nemo.

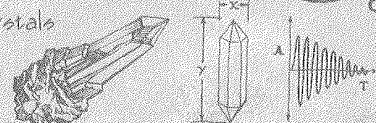
MAP OF THE SUBTERRANEAN WORLD



The subterranean world you are about to enter is open only to a select few researchers. Please do not tell the public what you have witnessed.

FINDINGS IN THE SUBTERRANEAN WORLD

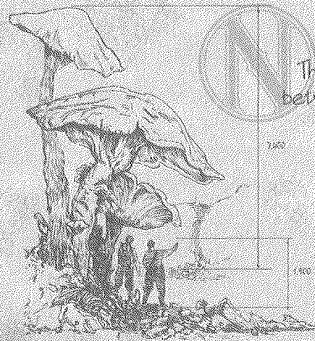
These crystals produce beautiful, precise tones.



880 Fathoms

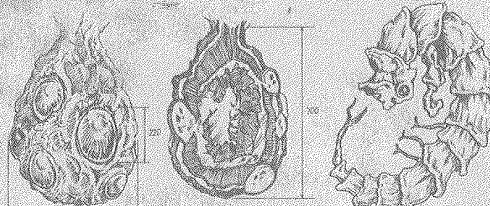
07 April 1870

There may be a link between the enormous growth of the mushrooms in this cavern and the special properties of the water here.



1,320 Fathoms

19 July 1871



Discovered a fragment of a fossilized egg. It seems to belong to a species of monstrous, prehistoric creatures. Further research necessary.

09 October 1872

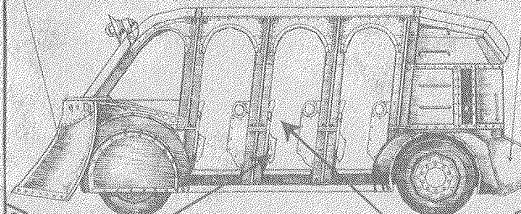
SUBTERRANEAN VEHICLE

Pusher

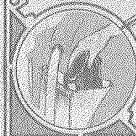
Plows rocks and debris.

Steam Tank

Powers vehicle.



- Place belongings in the seat pocket.
- Keep firm hold of the safety bar.



TOKYO DISNEY SEA

© Disney