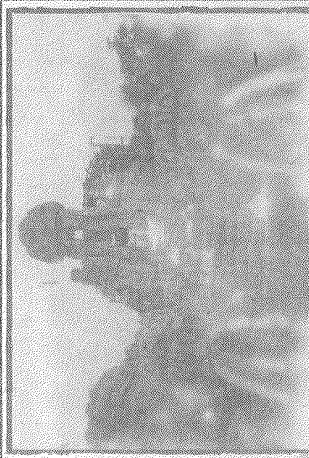
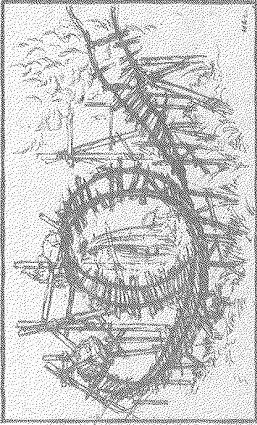


An Eruption of Anger!!

In response, the anger of the gods exploded at the human beings that had defiled them. A torrent of flames burst out around the god of fire, while a wall of water like a flood gushed from the mouths of the god of water.



Twisted Rails & Speeding Hopper Cars



The forces of water and fire met between the two statues, creating a giant cloud of steam and twisting the rail tracks inside.

the excavation site into a 360° loop.

The hopper cars, loaded with unfortunate members of the dig team, were then propelled through the site at an extremely high speed, filling the area with their echoing screams.



- Please put large bags, etc. in the nearby lockers.
- After boarding, please lower the shoulder bar so it is firmly against your body.
- Please remove earrings before boarding.

TOKYO DisneySEA®

© Disney

During their work on an ancient temple, a restoration team mistakenly placed statues of the god of fire and the god of water so that they faced each other—something the ancient myths regarding the deities had strictly forbidden.



LOST RIVER DELTA A series of supernatural phenomena at a local excavation site has been linked to the mistaken positioning of two giant statues.

RAGING SPIRITS Ancient Statues Cause of Excavation Site Phenomena?

Lost River Delta TOKYO DISNEYSEA

Vol. 1 Special Issue ENGLISH



EL RIO PERDIDO HERALDO